

# HAPPY

## OrkesterMester 2022/23

1  $\text{♩} = 152$  **A**

*mf* 6 3-8

10

14 **B**

2 15-16 *f*

19

23

27

31

34 **C**

*mf* 2 36-37

38

Measures 38-49. The key signature is one sharp (F#). Measures 42-45 are marked with a '4' and a fermata. Measures 48-49 are marked with a '2' and a fermata. The notation includes various note values, rests, and dynamic markings.

50 **D**

Measures 50-53. The key signature is one sharp (F#). The notation includes various note values, rests, and dynamic markings.

54

Measures 54-57. The key signature is one sharp (F#). The notation includes various note values, rests, and dynamic markings.

58

Measures 58-61. The key signature is one sharp (F#). The notation includes various note values, rests, and dynamic markings.

62

Measures 62-65. The key signature is one sharp (F#). The notation includes various note values, rests, and dynamic markings.

66 **E**

Measures 66-69. The key signature is one sharp (F#). The notation includes various note values, rests, and dynamic markings.

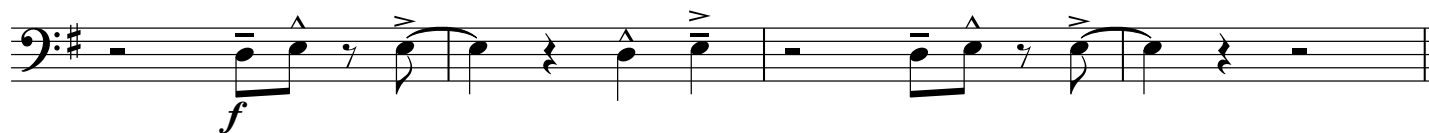
70

Measures 70-73. The key signature is one sharp (F#). The notation includes various note values, rests, and dynamic markings.

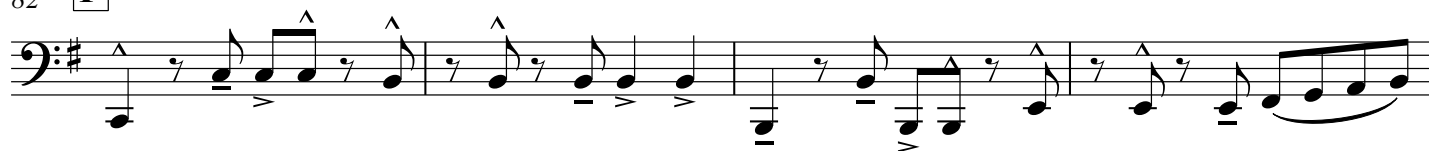
74

Measures 74-77. The key signature is one sharp (F#). The notation includes various note values, rests, and dynamic markings.

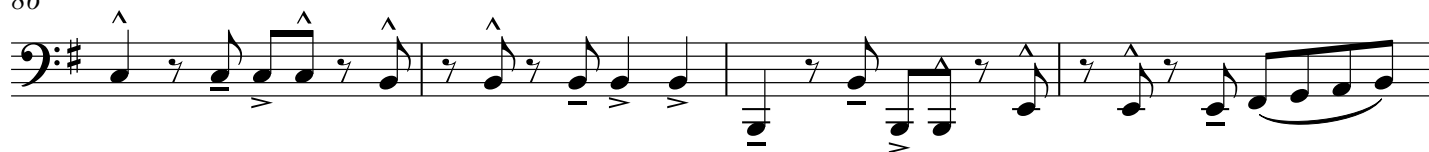
78



82

**F**

86



90



94

